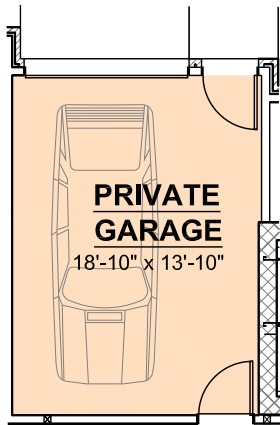
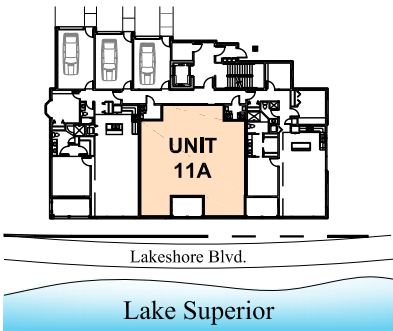
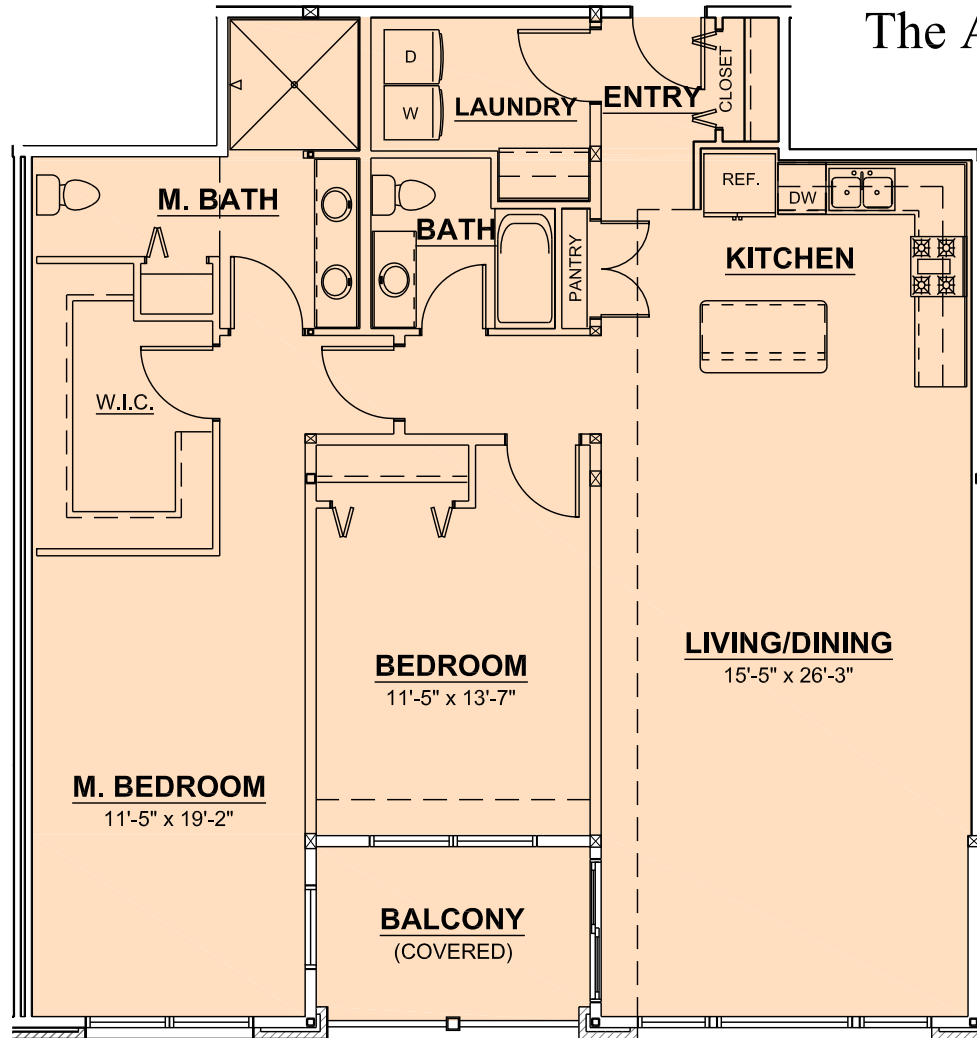


The Adams Building  
First Floor  
Unit 11A  
October 17, 2017



UNIT FLOOR AREA:	1,440 S.F.
PORCH AREA:	83 S.F.
TOTAL AREA:	1,523 S.F.
PVT. 1 CAR GARAGE	256 S.F.
+1 ASSIGNED SPACE IN BASEMENT GARAGE	



The Landing Development Group LLC reserves the right to amend the design, floor plans, features, specifications, and prices illustrated without notice.



COPYRIGHT © 2017 BY BARRY J. POLZIN ARCHITECTS.  
ALL RIGHTS RESERVED.